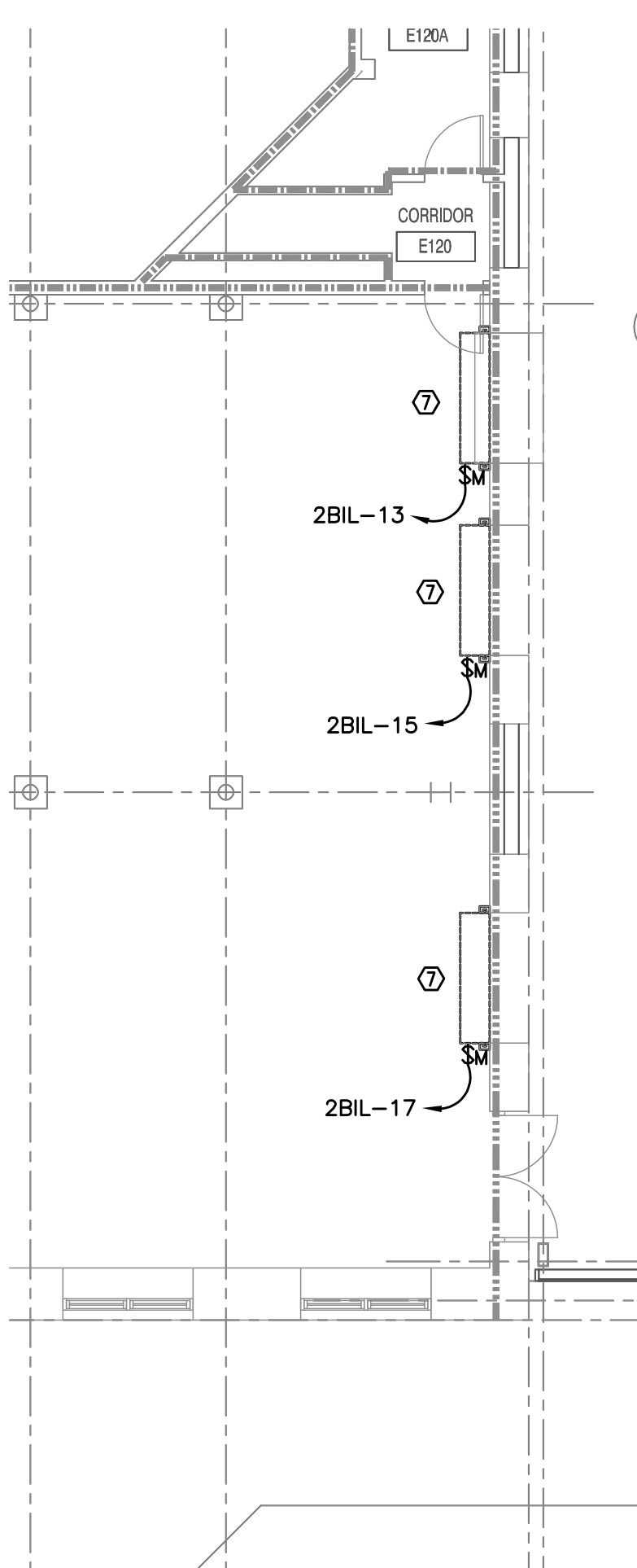
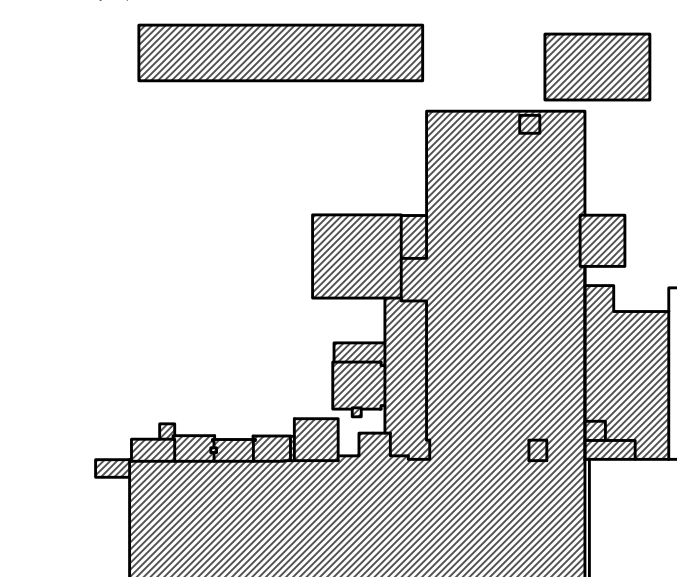
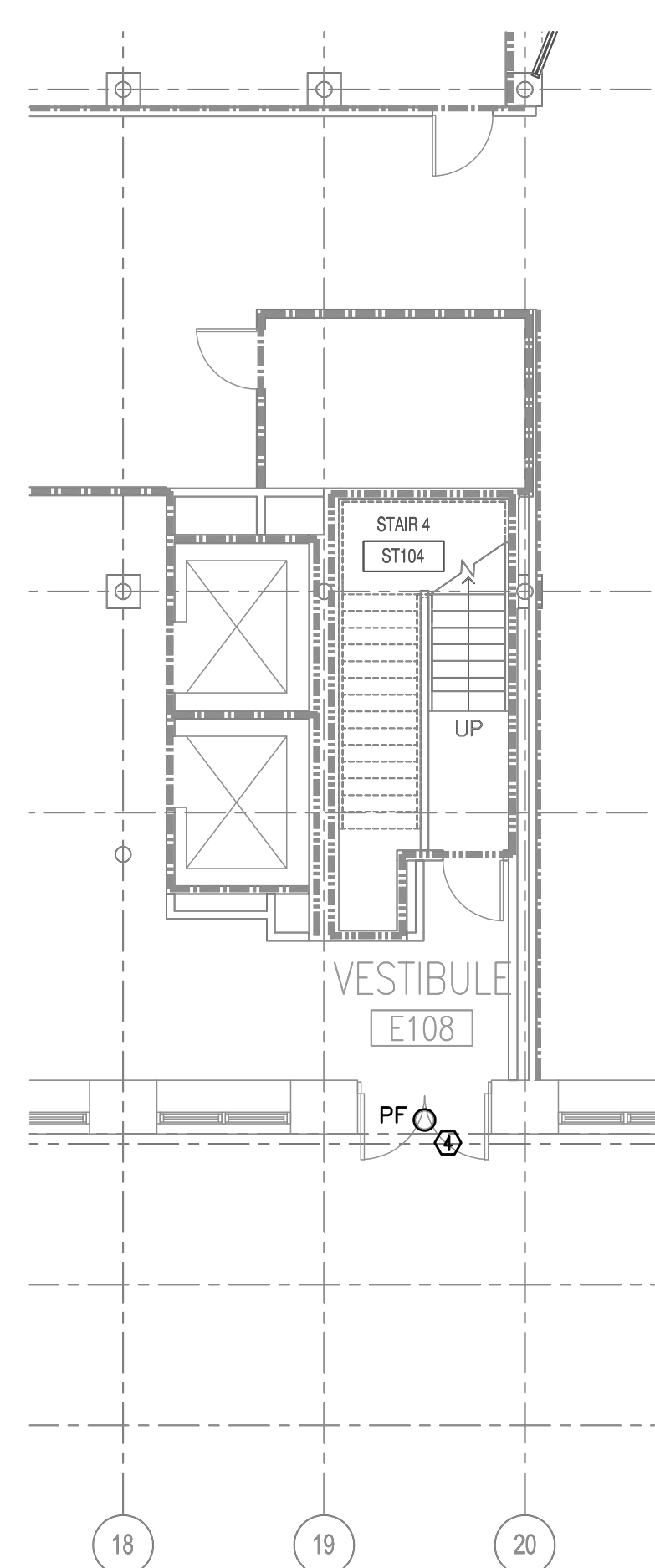


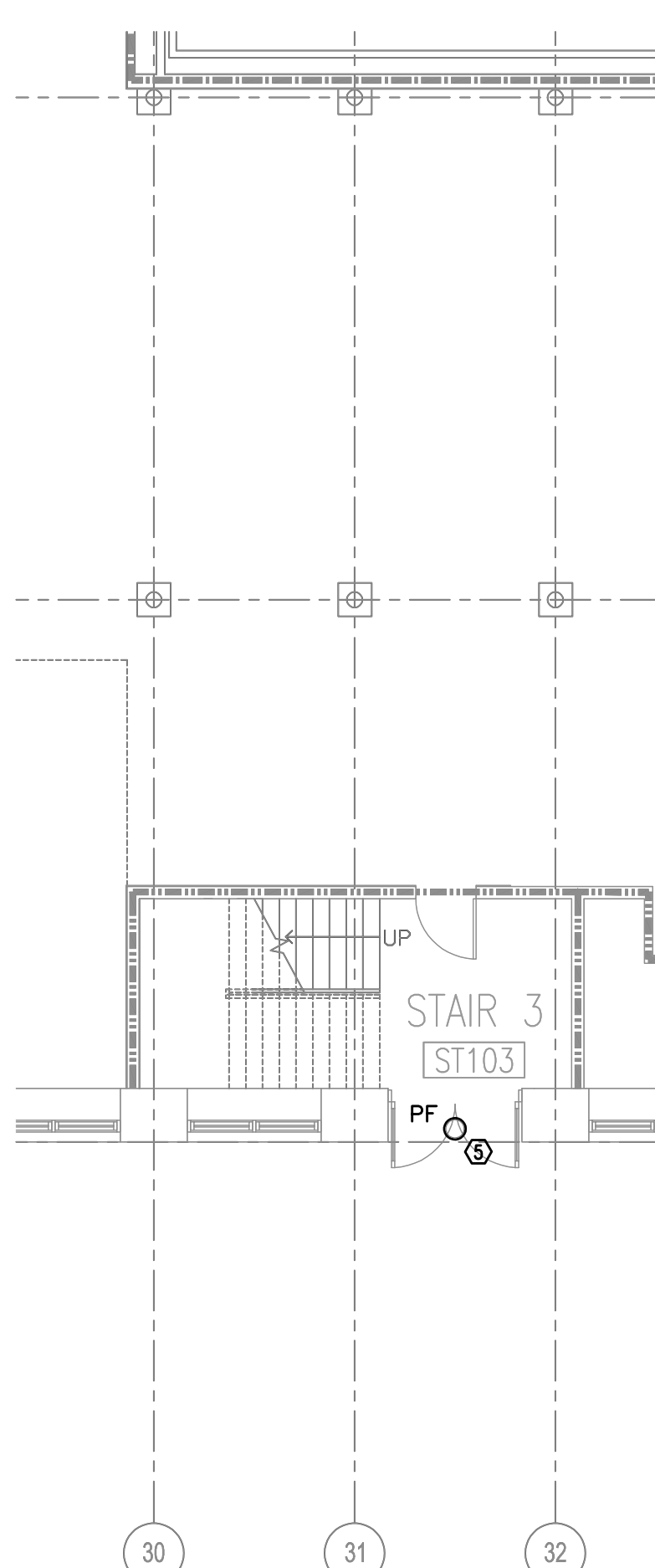
number	item	date



2 ENLARGED AREA - EXHIBIT GALLERY  
1/8"=1'-0"



3 ENLARGED AREA - VESTIBULE E108  
1/8"=1'-0"



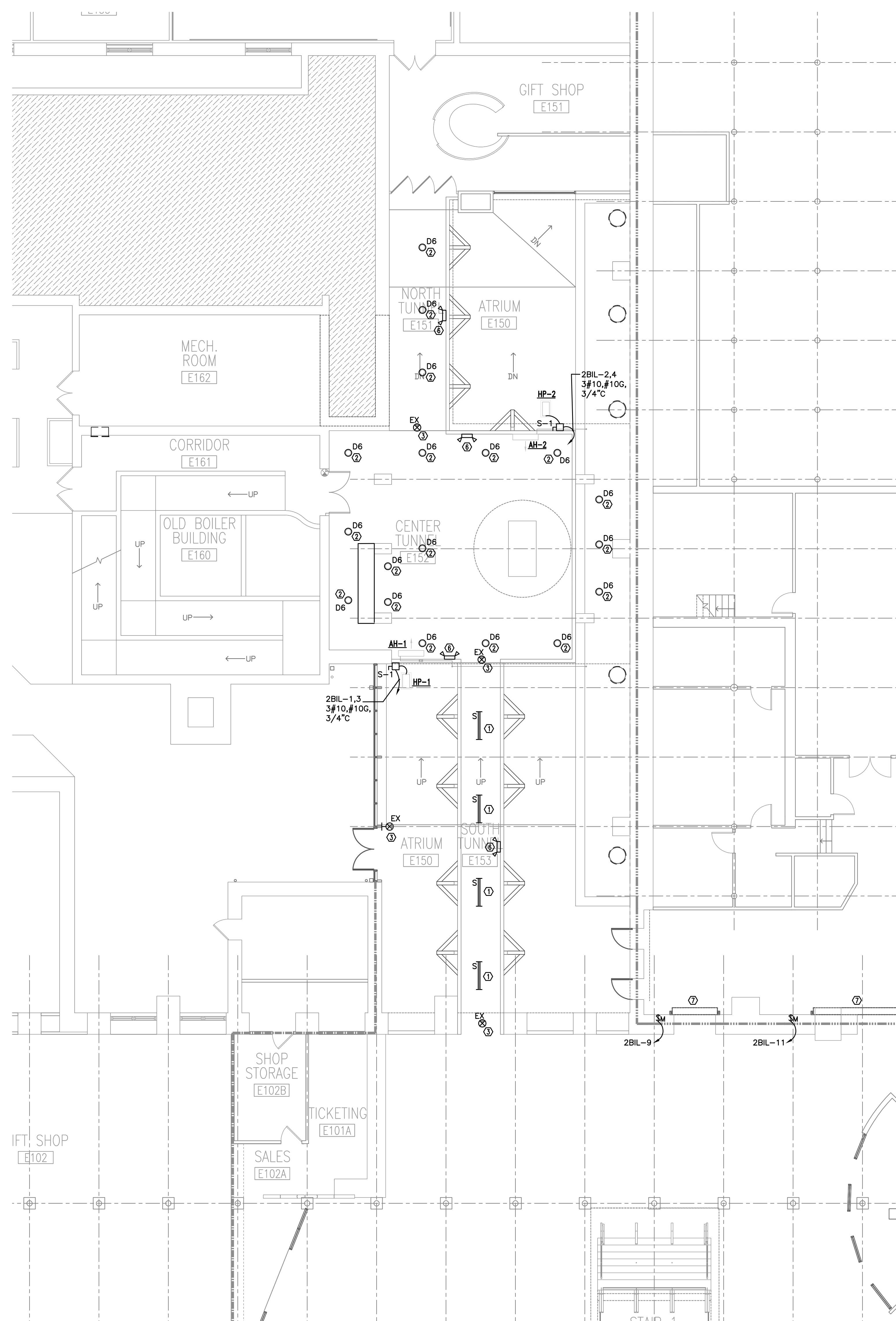
4 ENLARGED AREA - STAIR 3  
1/8"=1'-0"

**GENERAL LIGHTING RENOVATION NOTES:**

SEE GENERAL NOTE 4 ON SHEET E0.0 FOR CIRCUIT MINIMUM REQUIREMENTS.

**RENOVATION NOTES KEYED TO PLANS:**

- 1 THE TEMPORARY SURFACED MOUNTED STRIP LIGHTS INTO LIGHTING CIRCUIT FEEDING CAN LIGHTS UNDERNEATH ATRIUM WALKWAY. LIGHTS SHOULD BE SWITCHED WITH CAN LIGHTS.
- 2 INSTALL NEW LED DOWNLIGHTS IN EXISTING CAN LIGHT LOCATIONS SHOWN. CONNECT NEW FIXTURE TO EXISTING SALVAGED DURING DEMOLITION. SEE DEMOLITION PLAN FOR MORE INFORMATION.
- 3 INSTALL NEW EXIT LIGHT IN LOCATION SHOWN. CONNECT NEW FIXTURE TO THE EXISTING EXIT LIGHTING CIRCUIT FROM EXISTING EXIT LIGHT SHOWN.
- 4 INSTALL NEW SURFACE MOUNTED FIXTURE TO BRICK ARCHWAY. THE FIXTURE INTO EXISTING CIRCUIT REMAINING FROM DEMOLITION OF EXISTING FIXTURE. ROUTE CONDUIT AND WIRING THROUGH NEW DOOR FRAME STRUCTURE TO NEW FIXTURE. COORDINATE INSTALLATION WITH ARCHITECT/ENGINEER PRIOR TO ROUGH-IN.
- 5 INSTALL NEW PENDANT MOUNTED FIXTURE TO BRICK ARCHWAY. THE FIXTURE INTO UNSWITCHED EXISTING AREA LIGHTING CIRCUIT WITHIN BUILDING. ROUTE CONDUIT AND WIRING THROUGH NEW DOOR FRAME STRUCTURE TO NEW FIXTURE. COORDINATE INSTALLATION WITH ARCHITECT/ENGINEER PRIOR TO ROUGH-IN.
- 6 INSTALL NEW EMERGENCY LIGHT IN LOCATION SHOWN. CONNECT NEW FIXTURE TO THE EXISTING EXIT LIGHTING CIRCUIT FROM EXISTING EXIT LIGHT SHOWN.
- 7 PROVIDE 1/2" C WITH SURFACE MOUNTED DOUBLE GANG BOX WITH TO DOOR CONTROL STATION LOCATION. COORDINATE EXACT LOCATION IN FIELD PRIOR TO ROUGH IN. BOX SHALL BE A FINISHED BOX FROM WIREMOLD OR APPROVED EQUAL. PAINT CONDUIT AND BOX TO MATCH SURFACE/WALL BEING MOUNTED ON. PROVIDE ALL CONTROL WIRING AS REQUIRED BY MANUFACTURER FOR A FULL AND WORKING DOOR SYSTEM.



1 ELECTRICAL RENOVATION PLAN  
1/8"=1'-0"