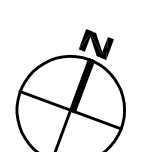
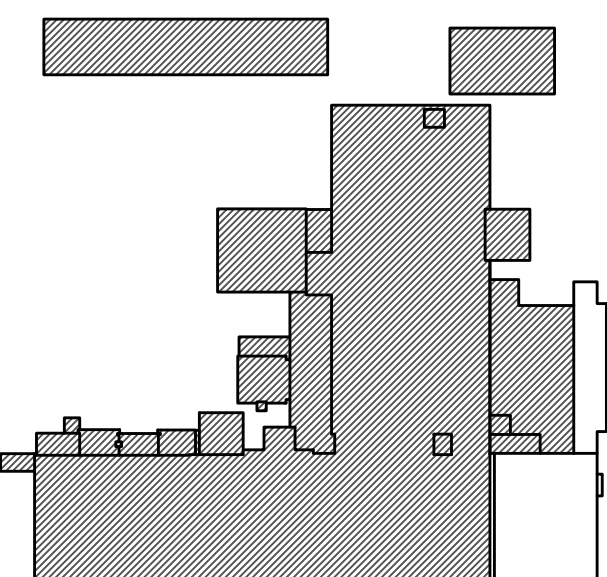




| number | item | date |
|--------|------|------|
| | | |
| | | |
| | | |
| | | |
| | | |
| | | |
| | | |
| | | |
| | | |
| | | |

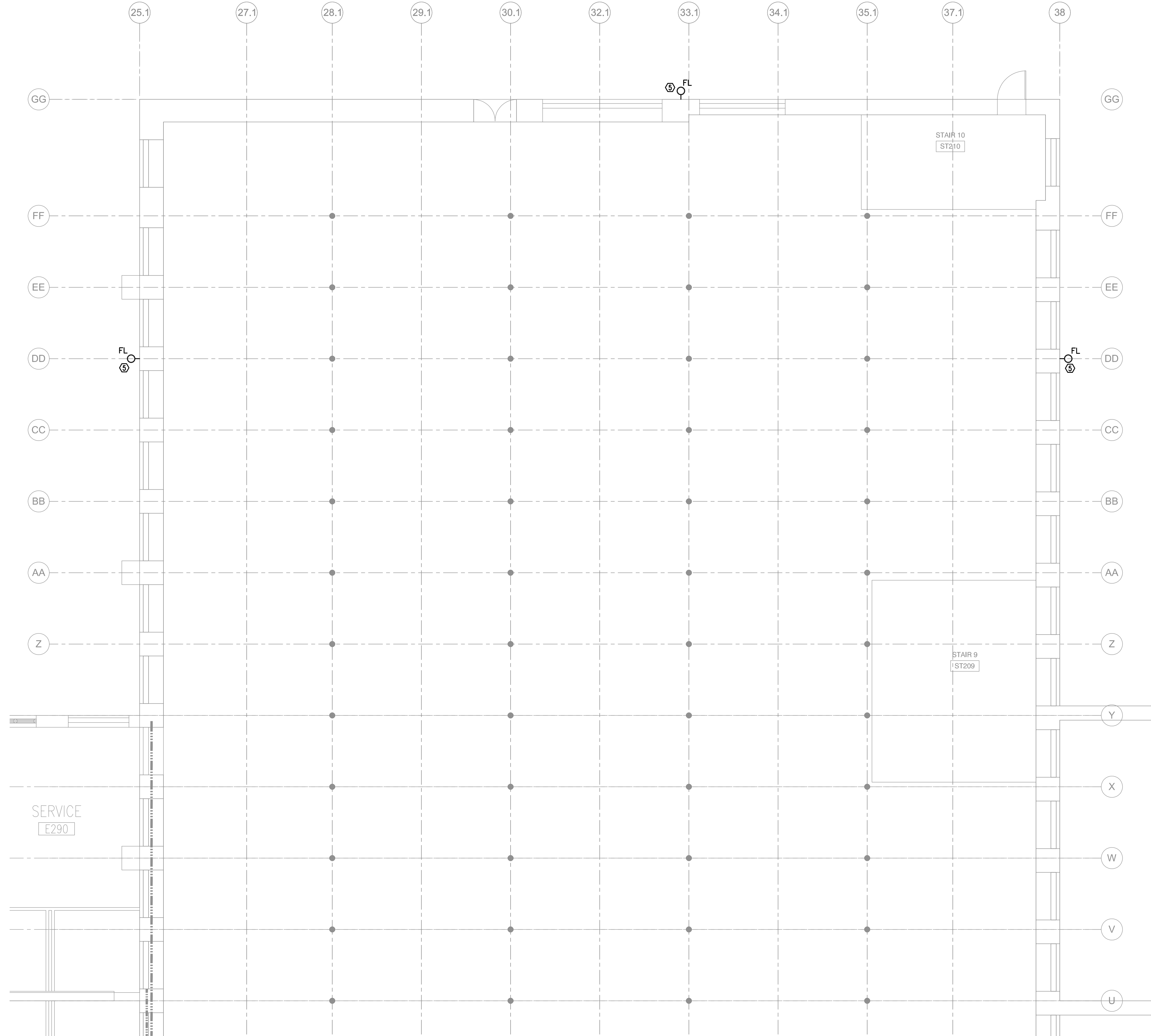
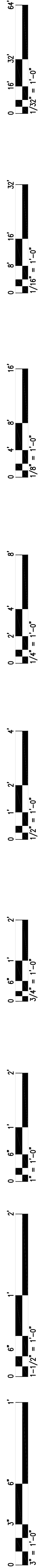


GENERAL LIGHTING RENOVATION NOTES:

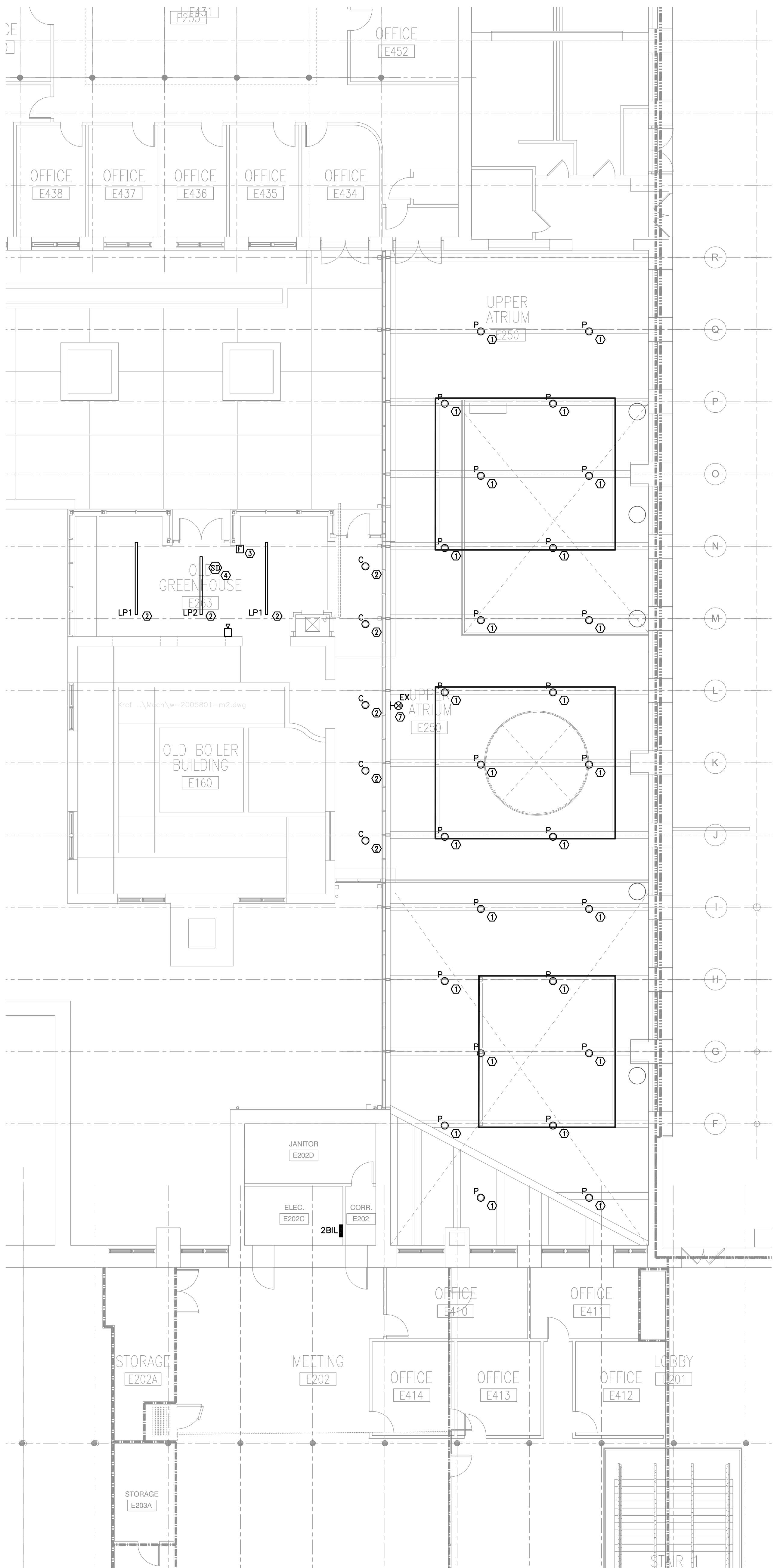
SEE GENERAL NOTE 4 ON SHEET E2.0 FOR CIRCUIT MINIMUM REQUIREMENTS.

RENOVATION NOTES KEYED TO PLANS:

- ① CIRCUIT NEW ATRIUM LIGHTING FIXTURES INTO EXISTING LIGHTING CIRCUITS REMAINING FROM DEMOLITION OF EXISTING ATRIUM DOWN LIGHTS. EXISTING TIMECLOCK AND SWITCHING CONTROL SCHEME SHALL REMAIN.
- ② CIRCUIT NEW LIGHTING FIXTURES INTO EXISTING LIGHTING CIRCUIT FOR GARDEN CENTER TRACK LIGHTING THAT WAS REMOVED DURING DEMOLITION. EXISTING SWITCHING SHALL REMAIN AS IS.
- ③ REINSTALL EXISTING FIRE ALARM PULLSTATION AT NEW LOCATION SHOWN. EXTEND EXISTING FIRE ALARM CONDUIT AND WIRING TO NEW LOCATION SHOWN.
- ④ REINSTALL EXISTING FIRE ALARM SMOKE DETECTOR AT NEW LOCATION SHOWN. EXTEND EXISTING FIRE ALARM CONDUIT AND WIRING TO NEW LOCATION SHOWN.
- ⑤ WALL WASH FIXTURES TO LIGHT UP NEW DORMERS. INSTALL FIXTURES ON FRONT DORMER BEAM SHINING UPWARD TOWARD BOTTOM OF ROOF DECK. ADJUST FIXTURE SUCH THAT BEAM ANGLE WASHES ROOF DECK EVENLY. TIE FIXTURES INTO ATRIUM LIGHTING CIRCUIT AND CONTROL WITH NEW PENDANT CYLINDERS.
- ⑥ INSTALL NEW WALL MOUNTED FLOODLIGHTS AT 10" BELOW SOFFIT OF ROOF. COORDINATE EXACT MOUNTING HEIGHTS WITH ARCHITECTURAL ELEVATIONS. EXTEND EXISTING WIRING AND CONDUIT FROM DEMOLITION OF ROOF MOUNTED FLOODLIGHTS TO NEW FIXTURE LOCATION.
- ⑦ INSTALL NEW EXIT LIGHT IN LOCATION SHOWN. CONNECT NEW FIXTURE TO EXISTING CIRCUIT SALVAGED DURING DEMOLITION. INSTALL FIXTURE AFTER NEW ROOF STRUCTURE HAS BEEN INSTALLED. SEE DEMOLITION PLAN FOR MORE INFORMATION.



② ELECTRICAL RENOVATION PLAN
1/8"=1'-0"



① ELECTRICAL RENOVATION PLAN
1/8"=1'-0"