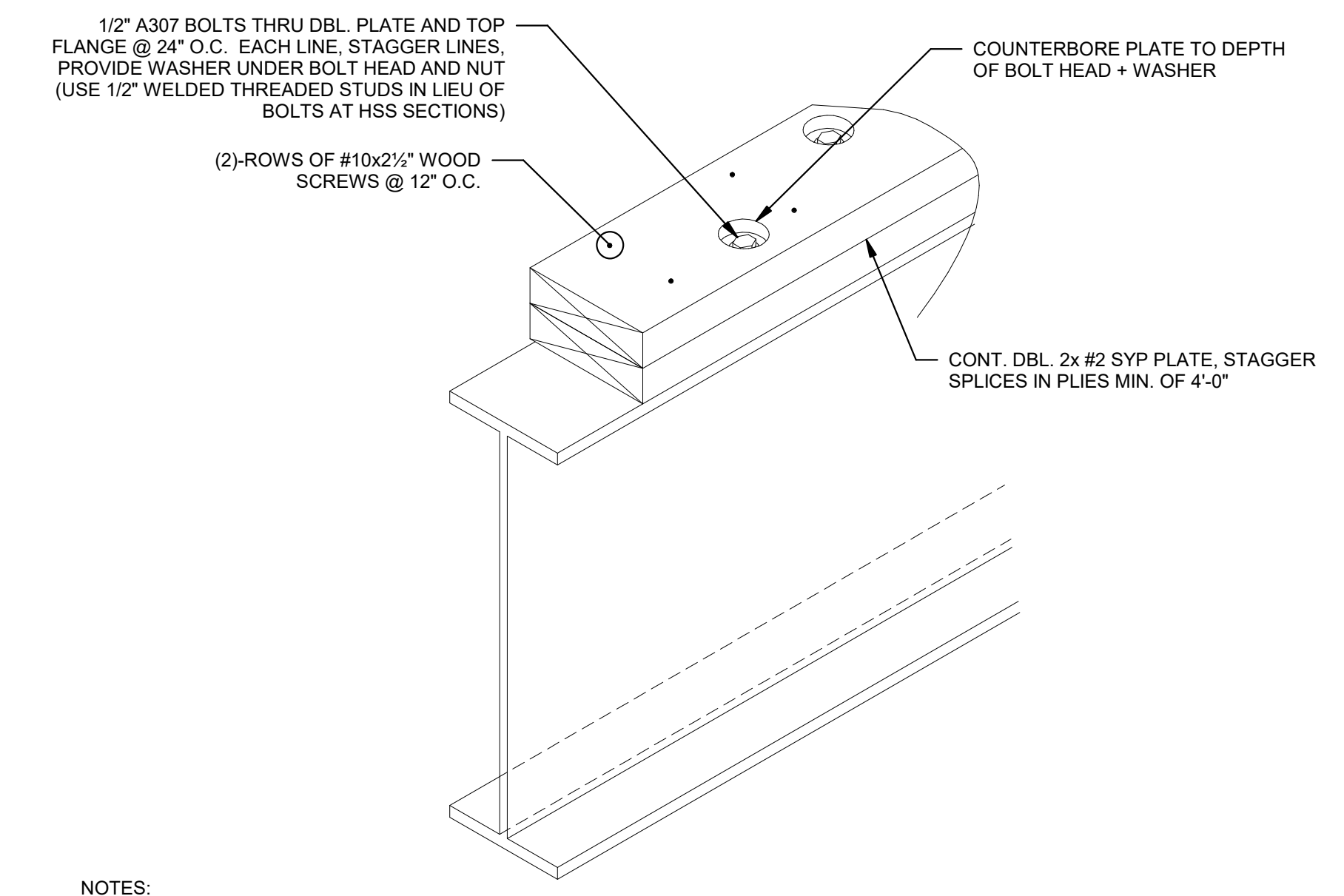
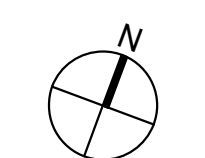
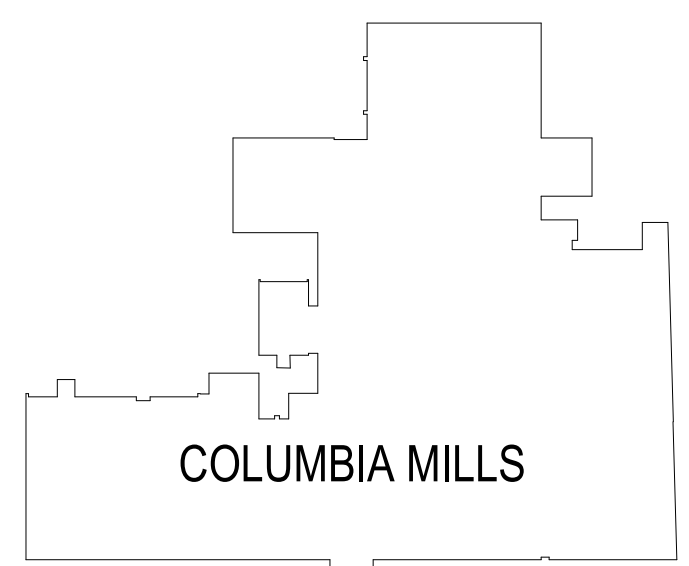
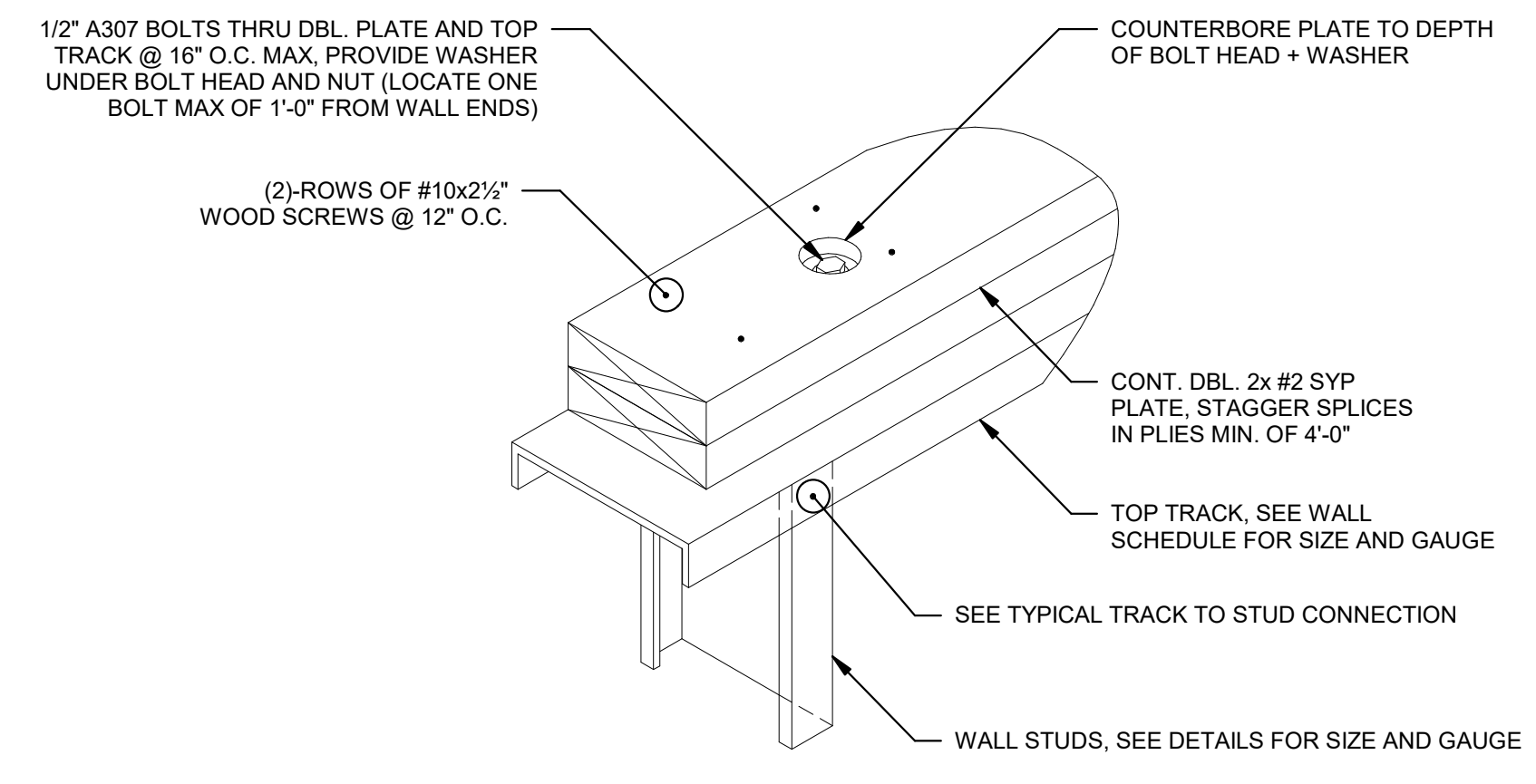


number	item	date



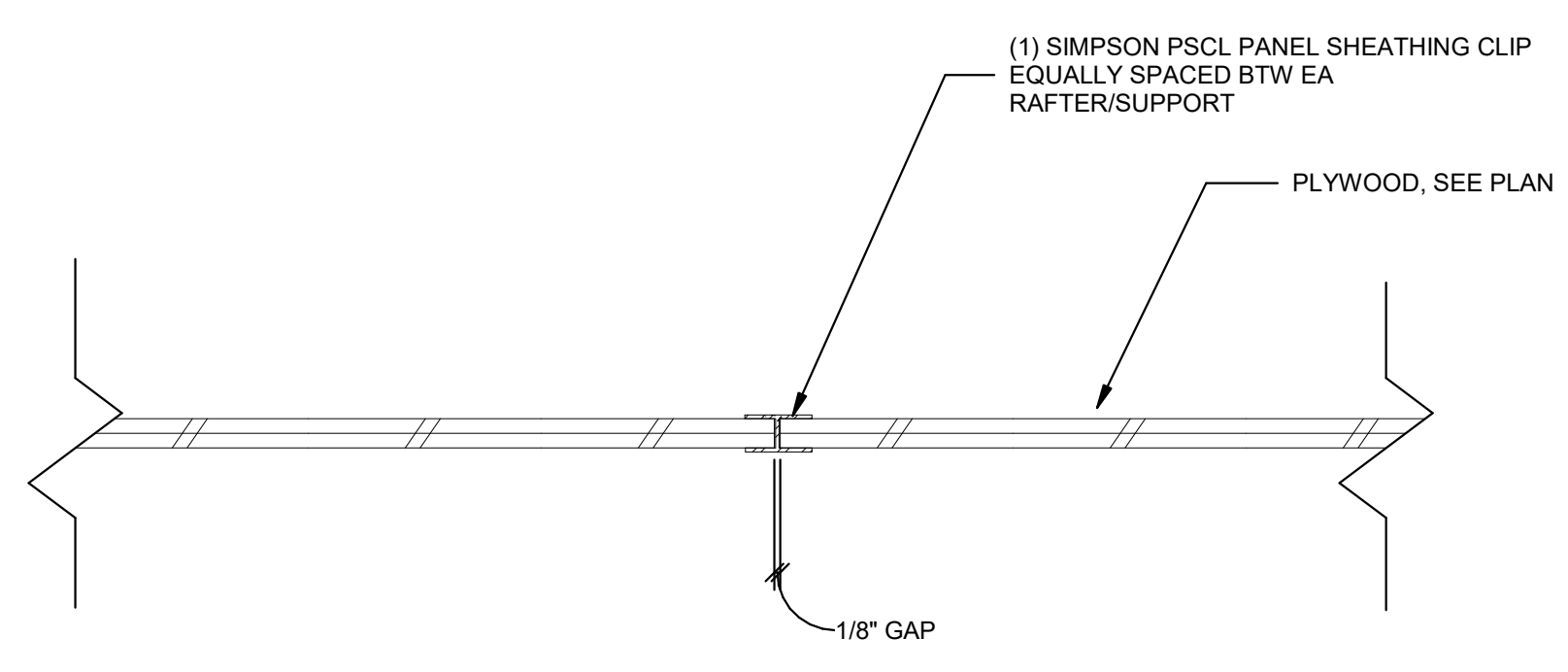
- NOTES:
1. RIP 2x PLATES TO MATCH BEAM FLANGE WIDTH
2. SEE PLANS AND SPECIFIC SECTIONS FOR BEAMS TO HAVE PLATES APPLIED TO TOP FLANGE
3. DETAIL IS SIMILAR WHERE TOP PLATES ARE INDICATED ON PLAN OR IN SPECIFIC SECTIONS TO HAVE 2x PLATS APPLIED TO BOTTOM FLANGE

3 TYP. WOOD PLATES TO STEEL BEAM
1" = 1'-0"

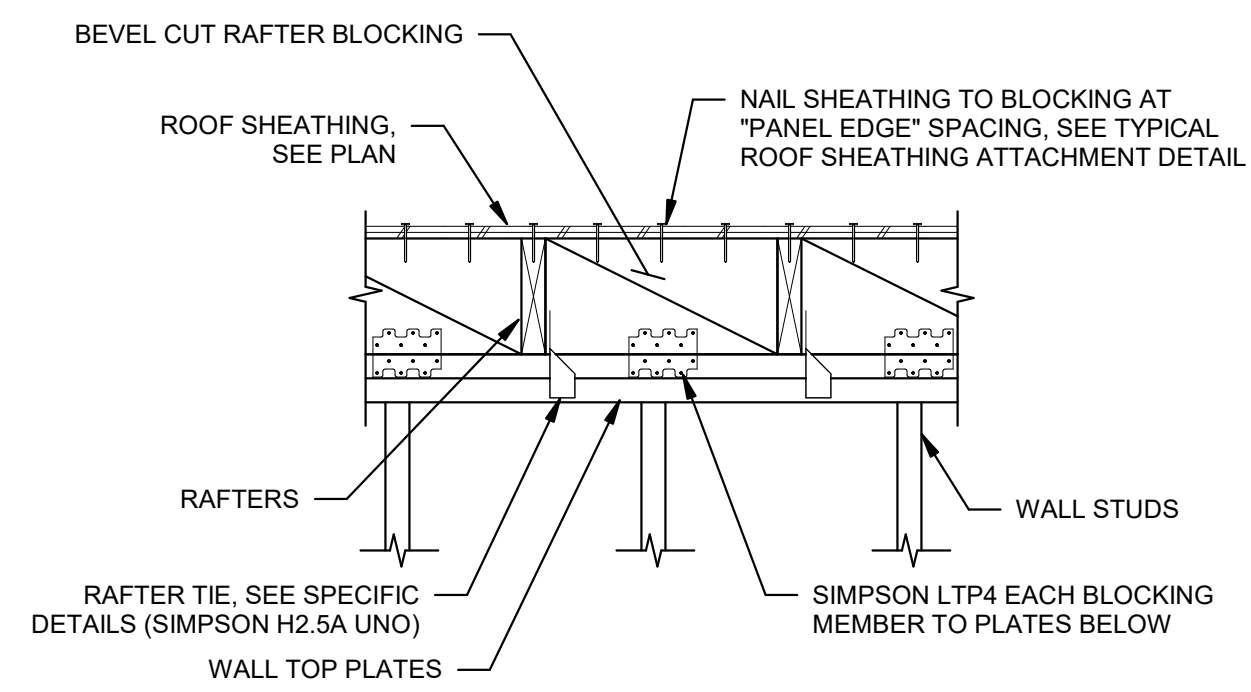


- NOTES:
1. PROVIDE 2x6 PLATES AT 6\"/>

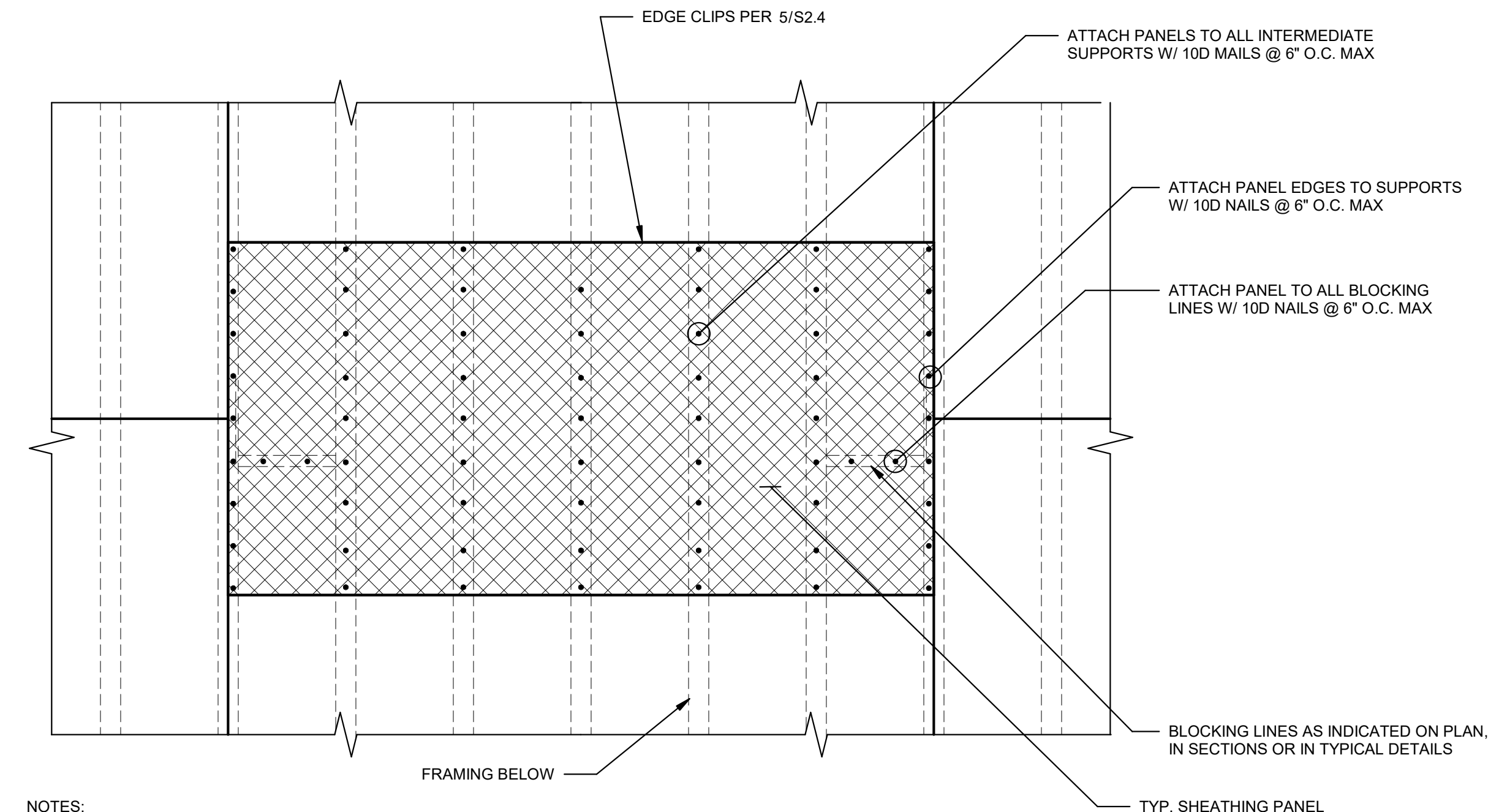
2 TYP. WOOD TOP PLATE ON LIGHT GAUGE TRACK CONNECTION
1" = 1'-0"



5 TYP. ROOF SHEATHING EDGE CLIPS
3" = 1'-0"



4 TYP. RAFTER BLOCKING
1" = 1'-0"



- NOTES:
1. CARE SHALL BE TAKEN TO ENSURE THAT NAILS ARE PROPERLY LOCATED SUCH THAT THEY WILL PENETRATE FULLY INTO SUPPORTING FRAMING BELOW.
2. STAGGER SHEATHING JOINTS IN PATTERN SHOWN UNLESS SPECIFICALLY NOTED OTHERWISE

1 TYP. ROOF SHEATHING ATTACHMENT
3/4" = 1'-0"